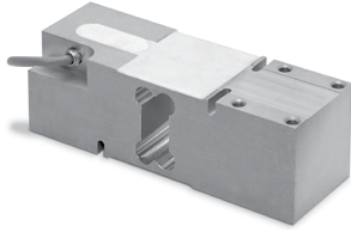
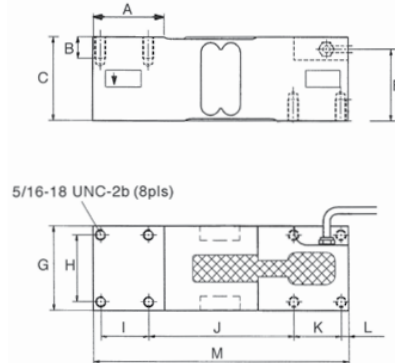


**RLPWM16** Single Point, Aluminum NTEP 1:5000 Class III Single Cell, IP67



Picture is a representation of actual product



**SPECIFICATIONS**

**Full Scale Output:**  
2.0 mV/V

**Output Resistance:**  
300-500

**Input Resistance:**  
300-500

**Material/Finish:**  
Aluminum

**Temperature:**  
Compensated temperature range  
14°F to 104°F/-10°C to 40°C

**Safe Overload:**  
150% Full scale

**Rated Excitation:**  
10V DC (15V maximum)

**Total Error:**  
0.02% Full scale

**Insulation Resistance:**  
1000 megohms

**Seal Type:**  
Environmentally sealed, IP67

**Cable Length:**  
3.1 m/10 ft

**Cable Diameter:**  
.190/PVC jacket

**Max Platform Size:**  
24 in x 24 in

**Cable Color Code:**

- Green.....+ Excitation
- Black.....- Excitation
- Blue.....+ Sense
- Brown.....- Sense
- Red.....+ Signal
- White.....- Signal

**Warranty:**  
Two-year limited warranty

**Approvals:**



**DIMENSIONS**

RATED CAPACITY	A	B	C	F	G	H	I	J	K	L	M
<b>kg/mm</b>											
50-635	52	16	62.3	52.3	63	50	35	107	35	5.5	188
<b>lb/inches</b>											
110.2-1455.5	2.04	.62	2.45	2.05	2.48	1.96	1.37	4.21	1.37	.21	7.40

**ORDER INFORMATION**

LOAD RATING		PART #	PRICE
50 kg	(110.2 lb)	91684	Consult
75 kg	(165.4 lb)	91686	Consult
100 kg	(220.5 lb)	91687	Consult
150 kg	(330.7 lb)	91688	Consult
200 kg	(440.9 lb)	91689	Consult
250 kg	(551.2 lb)	91690	Consult
300 kg	(661.4 lb)	91691	Consult
500 kg	(1102.3 lb)	91692	Consult
635 kg	(1455.5 lb)	91693	Consult

**INTERCHANGEABLE PRODUCTS**

MANUFACTURER	MODEL	PAGE #
*HBM®	PW16	251
VPG TedeA-Huntleigh	1260	343
Rice Lake Weighing Systems	RL1260	175

\*Color code is different

RICE LAKE WEIGHING SYSTEMS